

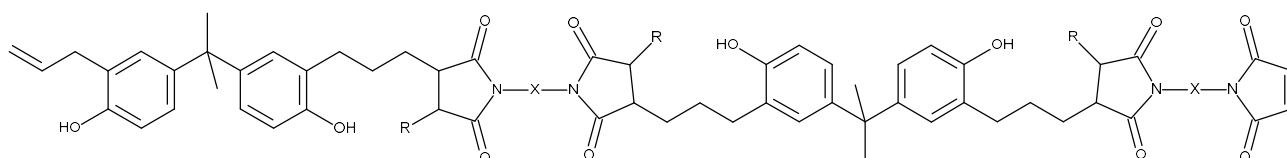
TECHNICAL DATASHEET

Homide 802

HOS-Technik
Vertriebs- und Produktions-GmbH
Am Industriepark 5
9431 St. Stefan, AUSTRIA
Tel. +43/4352/52587
Fax +43/4352/52588
E-mail: hos@hos-technik.at
www.hos-tec.com

Resin based on bismaleimide monomers, reactive diluent and toughening agent

1. Chemical Structure:



2. Chemical Properties:

| Characteristic | Specification | Method of Analysis |
|------------------|-------------------|--------------------|
| Form: | Resolidified melt | - |
| Colour: | Brown | - |
| Gel time: | 300-500 sec | Hot plate at 171°C |
| Softening range: | 40-70°C | DSC |
| Polymer content: | 40-70 % | GPC |
| Monomer content: | 30-60 % | GPC |

3. Handling:

Please refer to safety data sheet Homide 802.

4. Storage:

Homide 802 should be stored in a cool and dry place at temperatures below 30°C, excluding humidity, in tightly closed containers. Under these conditions the product can be stored for a period of at least six months.