

# Technical Datasheet Homide 250



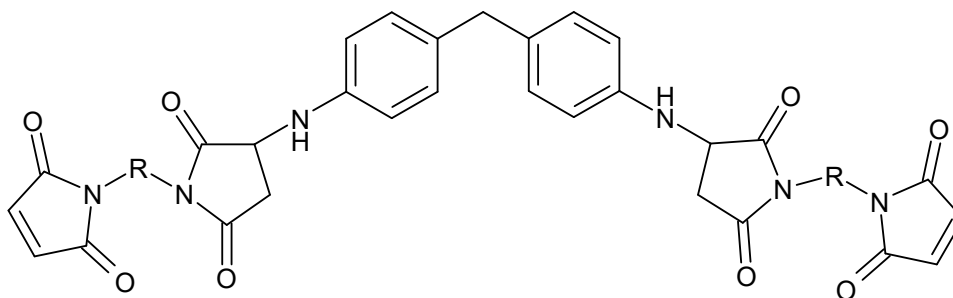
Document No.: TD 023  
Revised: KA/AU, 20.05.2020

HOS-Technik GmbH  
Am Industriepark 5  
9431 St. Stefan  
AUSTRIA

T: +43 4352 52587  
F: +43 4352 52588  
hos@hos-technik.at  
www.hos-tec.com

Bismaleimide resin  
CAS-no. 26140-67-0

## 1. Chemical Structure:



## 2. Chemical Properties:

Characteristic	Specification	Method of Analysis
Form:	Powder	-
Colour:	Yellow	-
Particle size:	100 % <200 µm	Dry sieving
Gel time:	150-300 sec	Hot plate at 171°C
Softening range:	90-125°C	DSC
Solubility:	in N-methylpyrrolidone, N-ethylpyrrolidone, dimethylformamide	-
DDM-content:	<0,1 %	GC
Bulk density:	380-420 kg/m <sup>3</sup>	-
Cure density:	1,4-1,5 g/cm <sup>3</sup>	-
Particle size D <sub>50</sub> :	max. 50 µm	CILAS

## 3. Handling:

Please refer to safety data sheet Homide 250

## 4. Storage:

Homide 250 should be stored cool and dry at temperatures not exceeding 35°C in tightly closed containers. Under these conditions the product can be stored for a period of at least two years.