

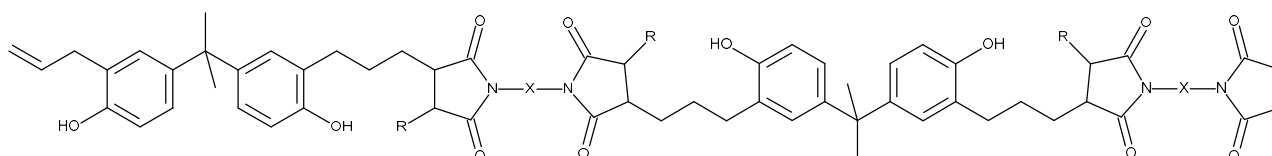
# TECHNICAL DATASHEET

## Homide 801L

HOS-Technik  
Vertriebs- und Produktions-GmbH  
Am Industriepark 5  
9431 St. Stefan, AUSTRIA  
Tel. +43/4352/52587  
Fax +43/4352/52588  
E-mail: hos@hos-technik.at  
www.hos-tec.com

Resin based on bismaleimide monomers and reactive diluent in MEK

### 1. Chemical Structure:



### 2. Chemical Properties:

Characteristic	Specification	Method of Analysis
Form:	Viscous liquid	-
Colour:	Brown	-
Gel time:	250-400 sec	Hot plate at 171°C
Solids content:	60-70 %	TGA
Solvent content:	30-40 %	TGA
Polymer content:	40-80 %	GPC
Monomer content:	20-30 %	GPC

### 3. Handling:

Please refer to safety data sheet Homide 801L.

### 4. Storage:

Homide 801L should be stored in a cool and dry place at temperatures below 20°C, excluding humidity, in tightly closed containers. Under these conditions the product can be stored for a period of at least six months.