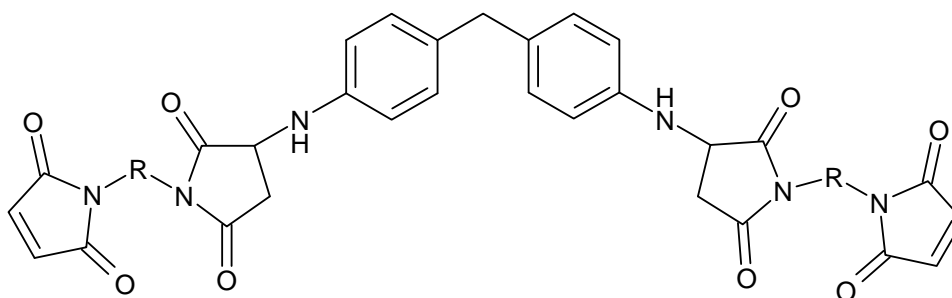


Technical Datasheet Homide 250		
Document No.: TD 023 Revised: KA/AU, 04.09.2018	HOS-Technik GmbH Obersteigerweg 4 9431 St. Stefan AUSTRIA	T: +43 4352 52587 F: +43 4352 52588 hos@hos-technik.at www.hos-tec.com

Bismaleimide resin
CAS-no. 26140-67-0

1. Chemical Structure:



2. Chemical Properties:

Characteristic	Specification	Method of Analysis
Form:	Powder	-
Colour:	Yellow	-
Particle size:	100 % <200 µm	Dry sieving
Gel time:	150-300 sec	Hot plate at 171°C
Softening range:	90-125°C	DSC
Solubility:	in N-methylpyrrolidone, dimethylformamide	-
DDM-content:	<0,1 %	GC
Bulk density:	380-420 kg/m ³	-
Cure density:	1,4-1,5 g/cm ³	-
Particle size D ₅₀ :	max. 50 µm	CILAS

3. Handling:

Please refer to safety data sheet Homide 250

4. Storage:

Homide 250 should be stored cool and dry at temperatures not exceeding 35°C in tightly closed containers. Under these conditions the product can be stored for a period of at least two years.